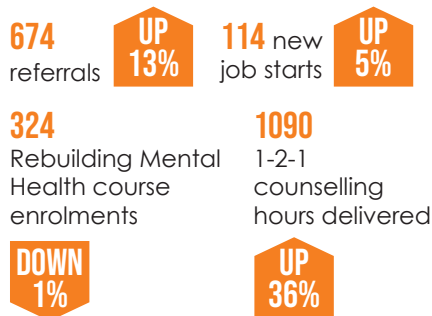


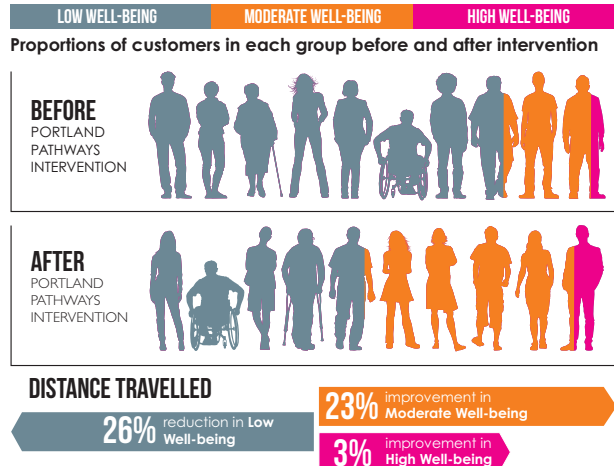
## PORTLAND PATHWAYS

Our community employment and mental health service based in Kirkby, Mansfield, Newark, Sutton and Worksop.



## HEALTH & WELLBEING IMPACT

(Warwick Edinburgh Mental Well-being Scale)



# IMPACT REPORT 2024-2025



## PORTLAND COMMUNITY

### VOLUNTEERING

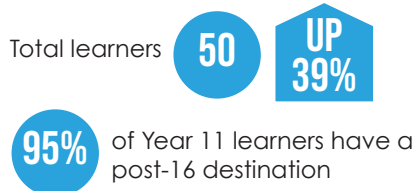


### CORPORATE SOCIAL RESPONSIBILITY



## JUMP START

A blended approach to secondary children in mainstream schools, specialist provisions or between school placements.



## POLLYTEACH SCHOOL

Alternative provision for key stages 2-4.



**Portland Charity**  
Nottingham Road, Mansfield, Nottinghamshire, NG18 4TJ  
T: 01623 499111  
E: marketing@portland.ac.uk  
[www.portland.ac.uk](http://www.portland.ac.uk)

# ALL PEOPLE WITH DISABILITIES WILL HAVE A LIFETIME OF OPPORTUNITY



# WELCOME FROM THE CHAIR & CEO



**Dr Dawn Green**  
Chair



**Dr Mark Dale**  
Group CEO

**2024-25 was a year of significant developments as we opened our first Nottingham City campus on Forest Road West and successfully completed a project to develop a second campus nearby, ready to open on 1st September 2025.**

These developments were all part of our plan to meet the rising demand for specialist places in the region and to support our Local Authorities with enhanced Local Offer provision in a time when the SEND system nationally is financially hard-pressed.

At our main Sherwood Forest campus in Ashfield we also completed a complete refurbishment of a 1950s residential building providing state-of-the-art accommodation and a very low energy building in use.

Whilst demand for specialist Further Education has continued to soar, our other provisions, Portland Freedom, Pollyteach School, Portland Pathways, Jump Start Alternative Provision and Newstart Outreach enjoyed a year of consolidation.

As ever we are profoundly grateful for the collective efforts of our volunteers and staff and the support we get from Local Authority Commissioners and grants from a wide range of charity funders. Our learners and citizens continue to amaze us with their resilience and their drive to achieve, bringing us great joy.

**“ I REALLY ENJOY MY LEARNER SESSIONS AND LIKE MY TIMETABLE AT PORTLAND. MY FAVOURITE SUBJECT IS ENGLISH AND THE TUTOR HAS A GOOD SENSE OF HUMOUR WHICH MAKES ME REALLY ENJOY HIS TEACHING SESSIONS. COMING TO PORTLAND HAS MADE ME VERY HAPPY AND I WOULD RECOMMEND IT TO PEOPLE THINKING OF COMING HERE. ”**

Learner

**“ PORTLAND COLLEGE DEMONSTRATED A HIGH LEVEL OF QUALITY AND CONSISTENCY IN ALIGNING WITH THE PRINCIPLES OF PERSON-CENTRED, EVIDENCE-INFORMED SUPPORT FOR AUTISTIC STUDENTS. ”**

National Autistic Society 2025

**“ CHLOE HAS ABSOLUTELY LOVED HER TIME AT PORTLAND, WE HAVE SEEN HER GROW IN SO MANY WAYS. THE SUPPORT SHE HAS HAD HAS BEEN EXCELLENT AND WE WILL ALL BE SAD WHEN SHE LEAVES. ”**

Parent

## PORTLAND COLLEGE

Total learners

281

UP  
12%



Duke of Edinburgh Award completions

**100%** Silver Award

**100%** Bronze Award

Achievement Rates for Accredited Qualifications

**80%** Vocational

**100%** Personal & Social Development

**94%** Sports Leaders

**98%** Health & Well-being targets

## WOODLAND ADVENTURE ZONE

Our fully accessible forest adventure.

**1597** Portland Charity sessions with participants from FE, Day Service, Pollyteach & FE Residential.

**1764** external participants

## PORTLAND FREEDOM CITIZENS

Number of young people supported through our CQC registered care services.

**124** Day Service

**73** Short Breaks

**17** Residential Learners

**40** Independent Living

