



# PROSPECTUS 2026



**WE ARE OUTSTANDING**  
You can be too.

# PROSPECTUS 2026

## CONTENTS

Principal's Address	3
We Are Outstanding	4-5
Your Journey Starts Here	6-7
Our Campuses	8-9
Study Programmes & Qualifications	10-13
Day Learning	14
Residential Learning	15
Centre of Excellence for Autism	16-17
Employability	18-19
Specialist Support	20-23
Newstart Activities Programme	24-25
Woodland Adventure Zone	26-27
Your Independence	28
Life After Portland	29
Portland Freedom	30-31
Safe & Equal	32-33
Start Your Portland Journey	34-35



# PRINCIPAL'S ADDRESS

Welcome to Portland College, a place full of aspiration. We want a society where all people with disabilities have a lifetime of opportunity.

It is an honour to be the Principal of such a special provision, which is recognised as Outstanding by Ofsted. Since I joined in 2015 as the Quality Improvement Manager we have made great progress in developing the quality of our education, raising aspirations for learners and staff and building community partnerships so that everyone can feel proud to be part of the College.

We are all ambitious on your behalf that you will feel included and well-supported at Portland. We actively review and develop our courses, always aiming to support your health and well-being, helping you to be more independent and to develop skills for employment or volunteering.

Every learner has an individualised programme and a personal tutor. You have a wide range of activities to choose from and our specialist staff will ensure that you thrive on your journey into adulthood.

At Portland you will have access to a wide range of experiences, including our fully accessible Woodland Adventure Zone, our state-of-the-art Newstart Theatre for sports, hospitality and catering, and performing arts, the newly built Manufacturing and Trades Centre, as well as our refurbished salon, our farm and our amazing therapy donkeys.

I am really proud to be able to bring even more Outstanding courses at our two new Nottingham Campuses, and I am looking forward to seeing the Hubs develop even further.

Portland is an amazing place, where wonderful things happen every day.

Come and visit us and see for yourself why I and the rest of the team love to work here.

**Angela Newton-Soanes**  
Principal



# EXPLORE • LEARN • SHINE



# WE ARE OUTSTANDING

You can be too.

Portland is a happy and safe place where you will make lots of friends and really fit in.

We have a long history of supporting people with disabilities to develop their communication, independence and employability skills.

We celebrate our learner's different needs and interests. Your education and support programme will be designed especially for you, and will normally last for one to two years.

We have three campuses and we will help you choose the right one to suit your needs.

## OUR CAMPUSES

- MANSFIELD
- FOREST ROAD WEST, NOTTINGHAM
- WOODBOROUGH ROAD, NOTTINGHAM



“ I LIKE THAT I GET TREATED LIKE AN ADULT. IT’S A CALM ENVIRONMENT AND CLASS SIZES ARE SMALL ”

Portland learner

“ FROM THE MOMENT LEARNERS ARRIVE ON THE EXPANSIVE COLLEGE GROUNDS, THEY ARE GREETED BY KIND AND CARING STAFF, WHO WELCOME THEM EACH DAY ”

Ofsted

“ MOLLY’S SPEECH AND SOCIAL SKILLS HAVE BEEN ONE OF THE BIGGEST IMPROVEMENTS AT PORTLAND AND THIS HAS HELPED HER MASSIVELY, NOT ONLY TO BE AS INDEPENDENT AS SHE CAN BE BUT ALSO HELP HER TO HAVE A VERY HAPPY FUTURE ”

Parent of learner

IN 2023, PORTLAND WAS GRADED OUTSTANDING IN EVERY CATEGORY BY OFSTED. IF YOU JOIN PORTLAND, WE WILL HELP YOU TO BE OUTSTANDING TOO!

# YOUR PORTLAND JOURNEY STARTS HERE

**GO**

## THINKING OF JOINING

### CHOOSE YOUR CAMPUS

- Mansfield
- Woodborough Road Nottingham
- Forest Road West Nottingham

See page 8 for details

### GET TO KNOW US:

- In Person Campus Tour
- Virtual Open Day

### LIKE WHAT YOU SEE?

- Apply

### CHOOSE

- Residential Learning (Mansfield Campus only) or
- Day Learning (depending on where you live)

### GETTING YOUR PLACE

If we can meet your needs we'll complete a 'Meet and Greet' and send an offer.

## YOUR TAILORED PROGRAMME

### CHOOSE YOUR STUDY PROGRAMME

Woodborough Road learners will follow a personalised learning programme.

See page 10

+ Maths & English

## EMPLOYABILITY OPTIONS INCLUDE:

\*Mansfield and Forest Road West learners

**EMPLOYABILITY SKILLS**

**WORK EXPERIENCE**

**SUPPORTED INTERNSHIP**

Leading to voluntary or paid employment

## INFORMATION, ADVICE & GUIDANCE

### YOU MIGHT ALSO NEED SUPPORT FROM THESE TEAMS:

- Transitions
- Speech & Language Therapy
- Assistive & Communication Technology
- Occupational Therapy
- Positive Behaviour Support
- Physiotherapy
- Specialist Sensory Support

**YOUR PROGRESSION TUTOR WILL HELP YOU ACHIEVE YOUR GOALS**

**YOU'LL WORK TOWARDS QUALIFICATIONS AND TARGETS TO ACHIEVE YOUR GOALS**

## LEARN INDEPENDENCE SKILLS

**COMPLETE YOUR PROGRAMME**  
(1 or 2 years)

**NEXT STEPS**

### CHOOSE

- Day Service
- Progress with Portland
- Further Education
- Portland Pathways
- Independent Living
- Employment

**YOUR EXCITING FUTURE**

## HEALTH & WELL-BEING

Is built into all programmes. You might choose to get involved in:

- Enrichment
- The Duke of Edinburgh Award
- Woodland Adventure Zone



# OUR CAMPUSES

Great news! We've expanded our Further Education provision into Nottingham, so even more people can benefit from the Portland experience.

So, we now have three campuses to choose from, depending on your individual needs. All campuses support learners aged 16-25 with an Education, Health and Care Plan.



## MANSFIELD CAMPUS

**Our main campus, situated on a 32-acre site in Harlow Wood supports people with a range of independence, personal development and employment outcomes.**

Programmes at this campus are available to all levels of learners who are comfortable in a large and open campus setting.

Learners will undertake their chosen Study Programme (see page 10) including work experience. Supported Internships are aspirational programmes available to those working on an employment pathway. We have excellent links with local employers to help you gain the valuable skills to help you progress into employment.

Mansfield Campus offers both day and residential programmes, and dependent on planned outcomes, learners can benefit from our wide range of facilities, including our Woodland Adventure Zone, Newstart Theatre and Sports Hall, refurbished salon, brand-new Construction and Manufacturing Centre, farm and donkey therapy.

## FOREST ROAD WEST CAMPUS

**This smaller Nottingham city centre campus provides day programmes focusing on vocational and employment outcomes.**

Programmes are available to learners on the Develop and Demonstrate Learner Journeys.

Learners will undertake their chosen Study Programme (see page 10) and work experience and Supported Internships are available to those who are working on their employability skills. We have excellent links with local employers to help you gain the valuable skills to support your progression into employment.

E-Gaming learners will benefit from our e-gaming suite packed with the latest tech, supporting learners to play, compete and create in an immersive setting.

Retail and Hospitality learners will be based at Forest Road West and undertake practical activities both on site and during work placements.

Learners on the Gardening and Trades programmes will complete the practical elements of their course at the Walled Garden in Wollaton Park.

Learners may also visit the Mansfield Campus throughout the year to benefit from additional facilities.

## WOODBOROUGH ROAD CAMPUS

**This enclosed campus in Nottingham city supports the most complex learners who may find transitioning into traditional college life on a busy campus harder to access.**

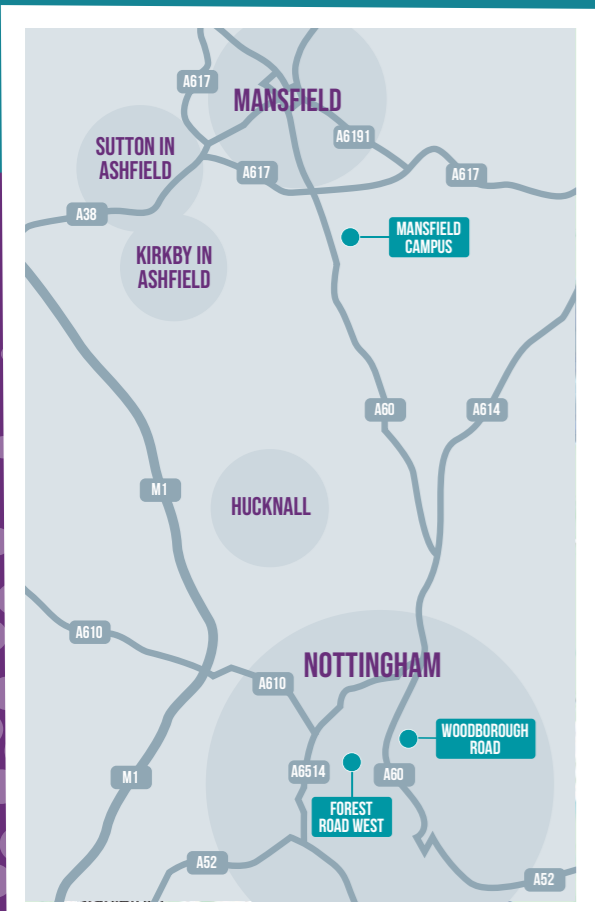
All learners will be on individualised learning programmes based on their EHCP outcomes. Challenging the idea that learners learn in a linear and target driven way, we strive to offer a tailored, person-centred learning experience around developing learner individual interests, goals and aspirations in order for them to thrive.

Our 'Person' approach focuses on:

- Personalised Programmes
- Emotional Well-being
- Resilience
- Sensory Rich
- Opportunity
- Nurture

The campus environment is located within a beautiful garden space with a horticulture area, sensory garden, bike trail and outdoor sensory equipment such as swing and trampoline. Learner's individualised programmes will link to our Preparing for Adulthood Framework that prioritises developing independence, health and well-being, communication and functional skills. A Positive Behaviour Support (PBS) approach is at the heart of what we offer and increasing learner's quality of life via taking positive risks, learning new skills and offering a sensory rich and nurturing environment.

Learners may also visit the Mansfield Campus throughout the year to benefit from additional facilities.



# STUDY PROGRAMMES & QUALIFICATIONS

For learners at our Mansfield or Forest Road West campuses, our Study Programmes can give you the skills, confidence and experience to find a job in your chosen industry.

You can work towards an accredited qualification and will have the chance to do work experience to help you decide what you want to do in the future. Maths, English and Digital Skills will be embedded within your study programmes. You may decide you want to complete qualifications in Maths, English or Digital Skills.

## STUDY PROGRAMMES

1

### Land Based and Trade

- Land based Studies **M** **N**
- Construction & Manufacturing **M** **N**
- Motor Vehicle Mechanic **M**



2

### Design Technology and Retail

- Business Studies and Retail **N**
- Art, Media and Marketing **M**
- Performing Arts and Dance **M**
- E-Sports & Games Development **N**



3

### Service and Leisure

- Sport and Leisure **M**
- Hospitality and Catering **M** **N**
- Care Services **M**
- Salon Services **M**



**M** Mansfield **N** Nottingham

ALL LEARNERS WILL UNDERTAKE TRAVEL TRAINING SKILLS UP TO GOLD (INTERNAL) LEVEL

4

### Bespoke Learner Journey

Our Bespoke Learner Journeys respond to the needs of our learners. We recognise this differs from a customised, traditional timetable. The emphasis is on creating a unique, personalised learning experience that caters to the specific needs, goals and preferences of the learner. This type of programme considers various factors, such as learning style, interests, skills and skills gaps. It involves close collaboration between therapy teams, family and Portland to ensure learners can achieve and transition into a full or partial customised programme.



## LEARNER JOURNEYS

Within your chosen Study Programme you will be streamed onto one of these Learner Journeys that will be tailored to suit you and your needs.

### Communicate

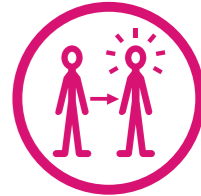
Learning how to express needs and wants in a variety of ways



MANSFIELD & WOODBOROUGH ROAD

### Develop

Developing skills and ideas to help you be more effective in education or employment



MANSFIELD & FOREST ROAD WEST

### Explore

Exploring ways to develop functional knowledge and understanding of life skills



MANSFIELD & WOODBOROUGH ROAD

### Demonstrate

This is a Supported Internship route demonstrating a range of skills, knowledge and understanding to support further education or employment



MANSFIELD & FOREST ROAD WEST



ALL LEARNERS WILL HAVE THE OPPORTUNITY TO PARTICIPATE IN THE DUKE OF EDINBURGH AWARD UP TO GOLD LEVEL.

# STUDY PROGRAMMES & QUALIFICATIONS



## WHEN WILL I BE AT COLLEGE?

All programmes start in September. You'll spend three days a week at College. A typical week could include:

**DAY 1** Tutorials covering Preparation for Adulthood skills.

**DAY 2** Improving your English, Maths and Digital Skills (if appropriate you could do GCSE English or Maths)

**DAY 3** Vocational Day: developing your practical skills in your chosen subject.

Your Study Programme will usually last between 1-2 years. It will be tailored around the outcomes in your Education, Health and Care Plan. This means we might help you focus on developing your personal skills, or you might choose to study a related qualification up to Level 2.

## WHAT'S NEXT?

When you've finished your programme, you might progress into a second year, undertake a Supported Internship, move into mainstream education, choose to look for paid or voluntary employment, or access adult health and social care support.

Your Tutor and our Transitions Team will help you make your decision.



## QUALIFICATIONS ON OFFER 2025-2026

### PERSONAL

Level	Qualification Title	Type
Entry 1 - Entry 2	AIM Qualifications - Personal & Social Development Skills	Award, Extended Award, Certificate
Entry 1 - Entry 3	OCR - Life and Living Skills	Award, Certificate, Diploma

### EMPLOYABILITY

Level	Qualification Title	Type
Entry 3 - Level 2	AIM Qualifications - Employability Skills	Award, Extended Award, Certificate

### VOCATIONAL

Level	Qualification Title	Type
Entry 2 - Entry 3	City & Guilds - Skills for Working Life (Animal Care)	Award, Certificate
Level 1	City & Guilds - Land Based Studies	Award, Certificate
Level 1	City & Guilds - Practical Horticulture Skills	Award
Entry 3 - Level 1	Gateway Qualifications - Building & Construction	Award, Certificate
Entry 3 - Level 1	Gateway Qualifications - Vocational Studies (E-Sports)	Certificate, Extended Certificate
Entry 3 - Level 1	Gateway Qualifications - Hospitality & Catering	Award, Certificate
Entry 3 - Level 1	Gateway Qualifications - Hair and Beauty Therapy	Award, Certificate
Entry 3 - Level 1	Gateway Qualifications - Health & Care	Award, Certificate
Level 1 - Level 3	Sports Leadership	
Bronze, Silver, Gold	Duke of Edinburgh	
Explore, Bronze, Silver	Trinity College London - Arts Award	Award
Entry 3 - Level 1	Edexcel Pearson - Essential Digital Skills	Award

### FUNCTIONAL SKILLS

Level	Qualification Title	Type
Entry 1 - Level 2	City & Guilds - English/Maths	Full Qualification
Entry 1-Entry 3	City & Guilds - Maths Skills - Themed Mathematics Awards	Award
Entry 1-Entry 3	City & Guilds - Maths Skills - Themed Mathematics Awards	Award

### GCSE

Level	Qualification Title	Type
	Edexcel Pearson - English Language	
	Edexcel Pearson - Mathematics	

\* Qualifications may be subject to change depending on application numbers

OTHER QUALIFICATIONS MAY BE AVAILABLE DEPENDENT ON YOUR NEEDS

# DAY LEARNING

Most of our learners access their Study Programme as a Day Learner, this means they travel to campus and go back home at the end of each day.

Learners will remain in the same group during their Study Programme and will make lots of friends.

A typical day starts around 9.30am and finishes at around 4pm, but every learner will be given a detailed timetable that shows their individual programme days and times.

Learners generally attend campus for three days a week during term times. Our term time calendar is available on our website.

Day learners can access our evening Newstart Activities programme, and will need to make their own transport arrangements.



# RESIDENTIAL LEARNING

If you would like to live at Portland while you're a learner, our Residential Learning Service at the Mansfield Campus is a great option. You will follow the same learning pattern as a Day Learner, but you will live on campus, enabling you to develop your independence and social skills by living with other learners.

Our full-time residential option provides high quality support up to seven days a week, for 38 or 52 weeks of the year.

We have a range of residential buildings on campus, including our newly developed Pines Building.

You will have your own modern, fully-furnished, en-suite bedroom and can access shared social spaces in your own accommodation building or visit friends in other buildings.

You will also be able to access our evening Newstart Activities programme.



**“ I LIKE MY TUTOR AND MAKING NEW FRIENDS ”**

Residential learner





# CENTRE OF EXCELLENCE FOR AUTISM



As a Centre of Excellence for Autism, we are proud to have been awarded Advanced Accreditation from the National Autistic Society for the third time in a row.

We get to know each one of our learners individually, we understand and support their specific needs and help them work towards their goals.

In partnership with learners and their families, we create a fully tailored programme and wraparound support, giving everyone the chance to really shine.



“PORTLAND COLLEGE DEMONSTRATED A HIGH LEVEL OF QUALITY AND CONSISTENCY IN ALIGNING WITH THE PRINCIPLES OF PERSON-CENTRED, EVIDENCE-INFORMED SUPPORT FOR AUTISTIC STUDENTS”

“RELATIONSHIPS BETWEEN STAFF AND STUDENTS ARE A CLEAR STRENGTH. THEIR (STAFF) DEEP UNDERSTANDING OF AUTISM AND COMMITMENT TO PROMOTING INDEPENDENCE, WELL-BEING AND SELF-ESTEEM WERE EVIDENT THROUGHOUT”

“STUDENTS DESCRIBED PORTLAND AS A HAPPY, INCLUSIVE PLACE WHERE THEY ENJOY FRIENDSHIPS, SENSORY SUPPORTS, AND MEANINGFUL LEARNING EXPERIENCES”

“SENSORY AND EMOTIONAL REGULATION ARE EMBEDDED THROUGHOUT THE CURRICULUM. STUDENTS HAVE ACCESS TO A WIDE RANGE OF TOOLS, QUIET SPACES AND THERAPEUTIC INPUT, INCLUDING OCCUPATIONAL THERAPY AND PSYCHOTHERAPY”

National Autistic Society



# EMPLOYABILITY

If you want to find a job after Portland, we will help you develop lots of skills and experiences to help you prepare for the world of work.

Our Information, Advice and Guidance (IAG) team deliver careers events throughout the year including Meet the Employer, Interview Day and our Reverse Jobs Fair.

## WORK EXPERIENCE

Work experience is a great way to learn what it's like to work in different industries.

We will talk to you about your work interests and goals and help you to find suitable work experience placements close to your home. You can do up to three work experience placements over the year, each lasting up to six weeks.

We also offer work experience opportunities at Portland College, including reception and administration, the Coffee Shop and other areas across the campus.



## SUPPORTED INTERNSHIPS

If you are on the Demonstrate learner journey you will do a Supported Internship as part of your programme.

This option allows you to develop your employability skills in a work-based setting over the course of the college year.

During your Supported Internship, you will complete up to four days per week working within a company, and a day at college learning new skills and developing your English and maths.

Supported Internships can often lead to paid employment at the end of your placement.



## CASE STUDY



Our partnership with Laing O'Rourke and their Explore Manufacturing facility is a great example of inclusive collaboration, creating opportunities that empower learners by recognising their individual strengths, abilities, and ambitions. Together, we co-created a Supported Internship programme focused on students' needs, supported by staff training, inclusive workplace adjustments, and a person-centred approach.

Learner Alex first joined the Explore Manufacturing stores team at Laing O'Rourke in January 2024 and he is continuing to thrive in his role two years on. His workload includes ordering goods, re-stocking shelves, delivering products around the plant, and completing computer-based tasks. With the guidance and encouragement of his colleagues, Alex has developed new skills and grown in confidence.

Alex is now working independently in his role in high-speed production, travelling to and from the site on his own four days a week.

The positive impact of this partnership has been felt by everyone involved. Claire Dyson, Office and Facilities Manager at Explore Manufacturing, told us: "The upfront work with the College, students and parents has been invaluable. It enabled Alex to join our business and feel comfortable from the beginning. He's thriving in his role and is a real credit to our team."

Angela Newton-Soanes, Principal at Portland College said "This success is a catalyst for change throughout industry. It is imperative that employers start from a place of learners' ability, rather than disability. What we at Portland College and Laing O'Rourke are doing is exactly that. We are learning from each other. If we get the structure right, we can repeat that structure. We are identifying positive adjustments that mean the way our supported interns work and operate result in a win-win for learner and employer, they can and are doing amazing things. This is testament to the integrity, transparency and respect that all parties bought into, which enabled a truly positive working partnership."

Alex's mum added: "Thank you for accepting him into your company. You've kept him safe, interested, and given him a purpose. He's proud to be going to Laing O'Rourke. It's companies like yours that make the difference."

### SOME OF OUR EMPLOYERS:



# SPECIALIST SUPPORT

These departments work closely together to support learners with their education programme and provide wraparound support in line with their Education, Health and Care Plan (EHCP).

## SPEECH AND LANGUAGE THERAPY (SLT)

Our Speech and Language Therapy team support learners with communication needs, including:

- Improving understanding of spoken language.
- Providing an effective means of communication to express their needs and make choices through speech, signing, symbols or use of communication aid devices.
- Understanding and learning about social communication skills.

## ASSISTIVE AND COMMUNICATION TECHNOLOGY TEAM (ACT)

The ACT team supports learners to be as independent as possible and achieve their outcomes using a range of technology, ensuring learners can take an active role in their sessions and the wider community.

## SPECIALIST SENSORY SUPPORT

Our Specialist Sensory Team supports learners who are Deaf, have a hearing loss, and/or a visual impairment. Through personalised assessments, interventions, and guidance, we support every learner to access learning in a way that works best for them.

BSL-trained communication support workers ensure d/Deaf learners can communicate confidently and fully participate in college life. Working with our Assistive Technology Team, we can use technology to enhance learning, independence, and personal development.

Focused on preparing learners for adulthood, we aim to equip learners with skills, confidence, and strategies to achieve their potential and live life confidently.



## HEALTH & WELL-BEING SUPPORT

We are proud to offer health and well-being support through our dedicated Nurse Practitioner who works alongside learners, families, and staff to:

- provide expert advice and guidance on health and well-being matters
- signpost to the right community health professionals and services
- strengthen partnerships with external agencies
- deliver staff training to build knowledge and confidence across our teams
- through a holistic, family-centred approach, ensure that everyone feels supported, informed, and empowered to promote positive health and well-being.

# SPECIALIST SUPPORT

## OCCUPATIONAL THERAPY (OT)

The Occupational Therapy team focus on increasing learners' independence skills and engagement with education. We provide individual and group sessions, equipment, and specialist advice and support to the education teams relating to:

- Fine motor skills
- Activities of daily living
- Travel training
- Sensory processing and self-regulation

## INFORMATION, ADVICE AND GUIDANCE (IAG)

The IAG Team at Portland supports learners throughout their educational journey by offering guidance on personal well-being, career planning, relationships, and accessing financial and external support services. They run various workshops and events to promote employability, health, independence, and social inclusion, and maintain high-quality standards through the internationally recognised Matrix Standard.

## TRANSITION

The Transitions Team will support with Initial Assessments, Meet and Greet, Transitions in and out of college and EHCP or Person Centred Reviews.

“THE SILVER TRAVEL TRAINING PROGRAMME HAS MADE ME HAVE MORE CONFIDENCE IN MYSELF”

Learner



## POSITIVE BEHAVIOUR SUPPORT (PBS)

We take a positive and person-centred approach to understanding and supporting the behaviours of our learners to increase their quality of life.

Each learner has a PBS plan in place where needed, which allows us to provide supportive environments and techniques to create safety within them and enhance learners' experience and opportunities.

## PHYSIOTHERAPY

Some learners have 1:1 physiotherapy to enable them to fully access their education programmes. Learner physiotherapy programmes are based around their individual needs and are developed to help achieve their education, health and well-being goals.

## DONKEY THERAPY

Our herd of donkeys support individuals or small groups to improve their health and well-being. This type of therapy is becoming more mainstream as it has yielded positive benefits for many different people from very diverse backgrounds and situations. One of the fascinating benefits is that you are working on so many different aspects at once. Sometimes, only the donkey and the learner know what has truly changed through developing their partnership. The donkeys at Portland have been very successful in helping to improve the behaviour of individuals, providing support with learning and improving confidence and comforting those in distress.

Newstart  
Theatre

# NEWSTART ACTIVITIES PROGRAMME

Our Newstart Activities are open to all learners, citizens and the wider community. We have a variety of weekly sports and arts clubs that run from 4pm during term time, as well as our special Friday Club/Fun Night events, excursions and family fun days! Most of our activities are £4 and you can pay as you go.

**SIGN UP AS A MEMBER  
FREE WITH THE QR  
CODE TO ACCESS OUR  
ACTIVITIES AND GAIN  
UPDATES ABOUT OUR  
UPCOMING EVENTS.**



## ACTIVITIES INCLUDE:

- Badminton
- Boccia
- Archery
- Football
- Music
- Dance
- Drama
- Basketball





# YOUR FULLY ACCESSIBLE FOREST ADVENTURE

**TRIPLE  
AWARD  
WINNING**



Did you know, as a Portland learner, you'll have free access to our very own Woodland Adventure Zone?

This forest adventure is the perfect place for you to take part in a range of exciting outdoor activities.

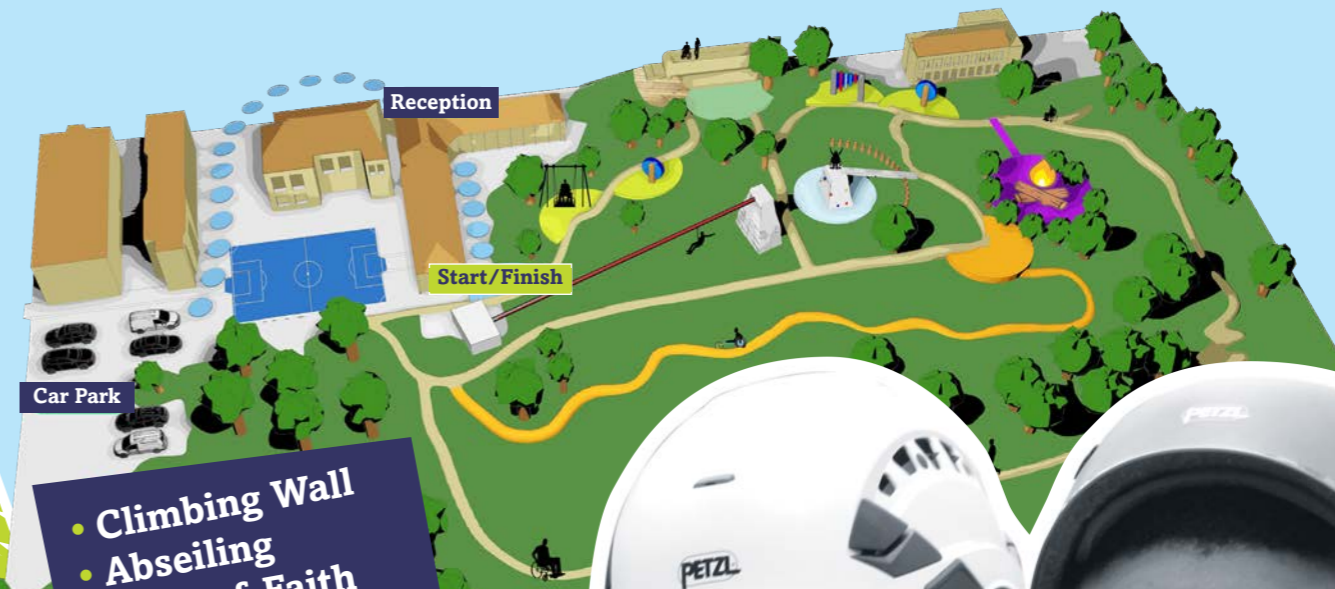
Purpose-built within the grounds of Portland College, the Woodland Adventure Zone is accessible to wheelchair users and people with disabilities, ensuring everyone has the opportunity to experience their own woodland adventure.

**We're open for public bookings too!  
Book your adventure...**

T: 01623 499159 E: [contact@woodlandadventurezone.com](mailto:contact@woodlandadventurezone.com)

W: [www.woodlandadventurezone.com](http://www.woodlandadventurezone.com)

Follow us on [@woodlandadventurezone](https://www.facebook.com/woodlandadventurezone)



- Climbing Wall
- Abseiling
- Leap of Faith
- Zipline
- Archery
- Handbike Trail
- Bushcraft
- Woodland Walk
- Sensory Trail
- Team Building



**“LEARNERS WERE OBSERVED ENJOYING USING THE ZIPLINE, IT WAS EVIDENT THAT LEARNERS PARTICIPATING IN THIS ACTIVITY CLEARLY EXPERIENCED A SENSE OF ACHIEVEMENT AND ENJOYED THE EXPERIENCE”**

National Autistic Society



# YOUR INDEPENDENCE

We want you to leave Portland College with as much independence as you possibly can. As part of your programme, your Progression Tutor will help you develop your skills in areas such as:

- **Personal Safety** - Teaching you what to do if you need help
- **Road Safety** - Helping you stay safe at the roadside
- **Travel Training** - Giving you the confidence to access public transport yourself
- **Money Skills** - So you can manage financial activities such as making payments, receiving change and budgeting
- **Social Skills** - Helping you feel more comfortable and involved in social situations
- **Concept of Time** - Teaching you how to understand the time and to manage your schedule
- **Independent Living Skills** - Teaching you how to carry out domestic tasks such as cooking, cleaning and managing bills so you can live more independently

Our specialist team will work with you to focus on the key areas that you need the most support with.

“**ABBIE’S CONFIDENCE AND SELF-WORTH HAS GROWN THROUGH HER TIME AT PORTLAND AND HER SUPPORTED INTERNSHIP. IT HAS BEEN LOVELY TO WATCH HER BLOSSOM INTO THE YOUNG ADULT THAT SHE HAS BECOME**”

Parent of learner



# LIFE AFTER PORTLAND

Our Study Programmes are designed to provide you with the skills, experience and confidence to build an exciting future.

Our Transitions Team will work with you to plan the next step of your journey, ensuring you're aware of every opportunity open to you.

If you're not quite ready to enter the world of work, you can apply to join our Progress with Portland learner journey.



# PROGRESS WITH PORTLAND

Our Progress with Portland programme in partnership with Inspire Learning, can support you to develop your confidence, skills and experience further to help you transition smoothly into the workplace.

The programme can last for an academic year and will focus on core independence skills and work experience in your chosen industry. You will also be able to improve your English and maths.

## PROGRESS LOCATION

- **Mansfield Central Library**  
Four Seasons Centre, Mansfield, NG18 1NH





# PORTLAND FREEDOM

We provide a variety of accommodation based support programmes for individuals with a range of needs including: physical disabilities, learning disabilities and autism.

For more information call **01623 499111** or email **college@portland.ac.uk**

**“I WANT TO BE ABLE TO LIVE IN MY OWN HOME IN THE FUTURE”**

Independent Living Resident



## INDEPENDENT LIVING

This residential service is for people aged 16-65 who need to develop independence skills before they can move into community or supported living.



## DAY SERVICE

Based on campus and in community hubs locally, Day Service is available from Monday to Friday for people aged 16+.



## SHORT BREAKS

Short Breaks provide a residential respite service for people aged 18-65. A typical stay ranges from three nights to two weeks.





# SAFE & EQUAL

## KEEPING OUR LEARNERS SAFE

Living a life that is free from harm and abuse is a fundamental right for every person.

Here at Portland, all staff, Governors and volunteers are committed to improving the safety and well-being of our learners and citizens.

We also ensure learners and citizens are kept safe online through a range of protective measures.

Our dedicated Safeguarding Team provide support across all areas of the College and are available at any time to deal with safeguarding concerns. We promote a clear process which makes it easy for learners, citizens and staff to raise any safeguarding concerns with the team.



## PREVENT DUTY

Prevent is a strand of the Government's Counter Terrorism Strategy. As a college, we help prevent young people from being exposed to radicalisation by upholding and promoting the Fundamental British Values:

- **Democracy**
- **The rule of law**
- **Individual liberty**
- **Mutual respect and tolerance of those of different faiths and beliefs**

Our partnership arrangement with the East Midlands Regional Prevent Network provides us with the opportunity to be informed on national and regional updates which defines and makes our safeguarding practice more effective.

## DIVERSITY, EQUITY AND INCLUSION

We celebrate diversity, equity and inclusion. We provide a welcoming and inclusive environment where everyone is respected and valued.



# START YOUR PORTLAND JOURNEY

Once you've decided that Portland College is the perfect place for you, your next step is to fill out an application form, including which campus you are applying for, and send it to our Admissions Team with a copy of your most recent Education, Health and Care Plan (EHCP) and supporting information.

If you're not sure which campus is right for you, our Admissions Team can arrange campus visits which can help you decide.

Once we receive your application, we will look at arranging a meet and greet where we will assess your requirements to make sure we can meet your needs and then we'll tailor a programme to suit you and your interests.



# APPLY TODAY

Join us in four easy steps:

## 1 VISIT US

Whether you want to study at our main campus in Mansfield, our Forest Road West campus in Nottingham, or our Woodborough Road campus in Nottingham, you can book an individual tour through our Admissions Team. A virtual open day is available for our Mansfield Campus.

## 2 APPLY

Fill in your application and send it to us with a copy of your most recent Education, Health and Care Plan (EHCP) and other relevant documentation in support of your application.

## 3 MEET AND GREET

Once you've applied, we will arrange for a meet and greet to take place at whichever Portland campus you have applied for.

## 4 OFFER

Following an initial meet and greet, if we are able to offer a placement, we will send a conditional offer. All placements are subject to funding being agreed from the applicant's Local Authority.

For more information contact our Admissions Team on:  
**01623 499114 / 499186**



**Portland College** Nottingham Road, Mansfield, Nottingham, NG18 4TJ  
22 Forest Road West, Nottingham, NG7 4EQ  
384 Woodborough Road, Nottingham, NG3 4JF

T: Main College Reception 01623 499111  
T: Admissions 01623 499114 / 499186  
E: [admissions@portland.ac.uk](mailto:admissions@portland.ac.uk)  
[www.portland.ac.uk](http://www.portland.ac.uk)

