



PROSPECTUS 2025

CONTENTS

Principal's Address	3
We are Outstanding	4
Learning at Portland	6
Your Portland Journey	8
Study Programmes & Qualifications	10
Residential Learning	13
Centre of Excellence for Autism	15
Nottingham Campuses	16
Employability	20
Your Independence	22
Life After Portland	23
Progress With Portland	23
Portland Freedom	24
Specialist Support	26
Our Facilities	30
New Developments	32
Your Fully Accessible Forest Adventure!	34
Safe & Equal	36
Start Your Portland Journey	38



PRINCIPAL'S ADDRESS

Welcome to Portland College, a place full of aspiration. We want a society where all people with disabilities have a lifetime of opportunity.

It is an honour to be the Principal of such a special provision, which is recognised as Outstanding by Ofsted. Since I joined in 2015 as the Quality Improvement Manager we have made great progress in developing the quality of our education, raising aspirations for learners and staff and building community partnerships so that everyone can feel proud to be part of the College.

We are all ambitious on your behalf that you will feel included and well-supported at Portland. We actively review and develop our courses, always aiming to support your health and well-being, helping you to be more independent and to develop skills for employment or volunteering.

Every learner has an individualised programme and a personal tutor. You have a wide range of activities to choose from and our specialist staff will ensure that you thrive on your journey into adulthood.

At Portland you will have access to a wide range of experiences, including our fully accessible Woodland Adventure Zone, our state-of-the-art Newstart Theatre for sports and performing arts, the newly built Manufacturing and Trades Centre as well as our farm and our popular therapy donkeys.

I am really proud to be able to bring even more Outstanding courses at our two new Nottingham Campuses, and I am looking forward to seeing the Hubs develop even further.

Portland is an amazing place, where wonderful things happen every day.

Come and visit us and see for yourself why I and the rest of the team love to work here.

Angela Newton-Soanes
Principal



EXPLORE • LEARN • SHINE

WE ARE OUTSTANDING

Inspected and rated

Good



“FROM THE MOMENT LEARNERS ARRIVE ON THE EXPANSIVE COLLEGE GROUNDS, THEY ARE GREETED BY KIND AND CARING STAFF, WHO WELCOME THEM EACH DAY”

Portland was graded Outstanding in every category in our Ofsted Inspection in January 2023.

We have a long history of supporting people with disabilities to develop their communication, independence and employability skills.

If you join Portland, we will help you to be Outstanding too.

“MOLLIE HAS COME ON LEAPS AND BOUNDS AT PORTLAND. SHE HAS IMPROVED HER LIFE SKILLS AND INDEPENDENCE AND HAS FORMED GREAT BONDS WITH BOTH STAFF AND HER FELLOW STUDENTS. HER TIME AT PORTLAND HAS DEFINITELY BEEN A FULFILLING AND WORTHWHILE EXPERIENCE FOR HER”

Parent of learner



OUTSTANDING LEARNING AT PORTLAND

Portland is a happy and safe place where you will make lots of friends and really fit in.

All our learners have different needs and interests. Your education and support programme will be designed especially for you, and will normally last for at least one year.

“THE CORE THEMES OF WELL-BEING, INDEPENDENCE, EMPLOYABILITY AND THE ASPIRATION TO GIVE LEARNERS A ‘LIFETIME OF OPPORTUNITY AND EMPOWER PEOPLE WITH DISABILITIES’ IS AT THE HEART OF THE COLLEGE”

National Autistic Society



“I LIKE THAT I GET TREATED LIKE AN ADULT. IT’S A CALM ENVIRONMENT AND CLASS SIZES ARE SMALL”

Portland learner



“MOLLY’S SPEECH AND SOCIAL SKILLS HAS BEEN ONE OF THE BIGGEST IMPROVEMENTS AT PORTLAND AND THIS HAS HELPED HER MASSIVELY, NOT ONLY TO BE AS INDEPENDENT AS SHE CAN BE BUT ALSO HELP HER TO HAVE A VERY HAPPY FUTURE”

Parent of learner

YOUR PORTLAND JOURNEY STARTS HERE

GO

THINKING OF JOINING

CHOOSE

- Main Campus near Mansfield or
- Nottingham Campuses (see page 16)

GET TO KNOW US:

- In Person Campus Tour
- Virtual Open Day

LIKE WHAT YOU SEE?

- Apply

CHOOSE

- Residential Learning or
- Day Learning (depending on where you live)

GETTING YOUR PLACE

If we can meet your needs we'll complete a 'Meet and Greet' and send an offer.

YOUR TAILORED PROGRAMME

CHOOSE YOUR STUDY PROGRAMME

See page 10

+ Maths & English

EMPLOYABILITY OPTIONS INCLUDE:

EMPLOYABILITY SKILLS

WORK EXPERIENCE

SUPPORTED INTERNSHIP

Leading to voluntary or paid employment

YOUR SPECIALIST SUPPORT

YOU MIGHT ALSO NEED SUPPORT FROM THESE TEAMS:

- Information, Advice, Guidance & Transition
- Speech & Language Therapy
- Assistive & Communication Technology
- Occupational Therapy
- Positive Behaviour Support
- Physiotherapy

YOUR PROGRESSION TUTOR WILL HELP YOU ACHIEVE YOUR GOALS

YOU'LL WORK TOWARDS QUALIFICATIONS AND TARGETS TO ACHIEVE YOUR GOALS

LEARN INDEPENDENCE SKILLS

COMPLETE YOUR PROGRAMME
(1 or 2 years)

NEXT STEPS

CHOOSE

- Day Service
- Progress with Portland
- Further Education
- Portland Pathways
- Independent Living
- Employment

YOUR EXCITING FUTURE

HEALTH & WELL-BEING

Is built into all programmes. You might choose to get involved in:

- Enrichment
- The Duke of Edinburgh Award
- National Citizen Service
- Woodland Adventure Zone



STUDY PROGRAMMES & QUALIFICATIONS

Our Study Programmes can give you the skills, confidence and experience to find a job in your chosen industry.

You can work towards an accredited qualification and will have the chance to do work experience to help you decide what you want to do in the future. Your Study Programme will also include Functional Skills Maths, English and ICT.

STUDY PROGRAMMES

1

Land Based and Trade

- Land based Studies M N
- Construction & Manufacturing M N
- Motor Vehicle Mechanic M



2

Design Technology and Retail

- Business Studies and Retail N
- Art, Media and Marketing M
- Performing Arts and Dance M
- E-Sports & Games Development N



3

Service and Leisure

- Sport and Leisure M
- Hospitality and Catering M N
- Care Services M
- Salon Services M



M Mansfield N Nottingham

4

Bespoke Learner Journey

Our Bespoke Learner Journeys respond to the needs of our learners. We recognise this differs from a customised, traditional timetable. The emphasis is on creating a unique, personalised learning experience that caters to the specific needs, goals and preferences of the learner. This type of programme considers various factors, such as learning style, interests, skills and skills gaps. It involves close collaboration between therapy teams, family and Portland to ensure learners can achieve and transition into a full or partial customised programme.



LEARNER JOURNEYS

Within your chosen Study Programme you will be streamed onto one of these Learner Journeys that will be tailored to suit you and your needs.

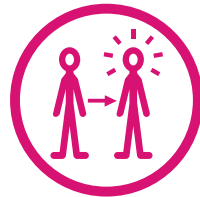
Communicate

Learning how to express needs and wants in a variety of ways



Develop

Developing skills and ideas to help you be more effective in education or employment



Explore

Exploring ways to develop functional knowledge and understanding of life skills



Demonstrate

This is a Supported Internship route demonstrating a range of skills, knowledge and understanding to support further education or employment



ALL LEARNERS WILL HAVE THE OPPORTUNITY TO PARTICIPATE IN THE DUKE OF EDINBURGH AWARD UP TO GOLD LEVEL.

QUALIFICATIONS ON OFFER 2025-2026

PERSONAL

Level	Qualification Title	Type
Entry 1 - Entry 2	AIM Qualifications - Personal & Social Development Skills	Award, Extended Award, Certificate
Entry 1 - Entry 3	OCR - Life and Living Skills	Award, Certificate, Diploma

EMPLOYABILITY

Level	Qualification Title	Type
Entry 3 - Level 2	AIM Qualifications - Employability Skills	Award, Extended Award, Certificate

VOCATIONAL

Level	Qualification Title	Type
Entry 2 - Entry 3	City & Guilds - Skills for Working Life (Animal Care)	Award, Certificate
Level 1	City & Guilds - Land Based Studies	Award, Certificate
Level 1	City & Guilds - Practical Horticulture Skills	Award
Entry 3 - Level 1	Gateway Qualifications - Building & Construction	Award, Certificate
Entry 3 - Level 1	Gateway Qualifications - Vocational Studies (E-Sports)	Certificate, Extended Certificate
Entry 3 - Level 1	Gateway Qualifications - Hospitality & Catering	Award, Certificate
Entry 3 - Level 1	Gateway Qualifications - Hair and Beauty Therapy	Award, Certificate
Entry 3 - Level 1	Gateway Qualifications - Health & Care	Award, Certificate
Level 1 - Level 3	Sports Leadership	
Bronze, Silver	Duke of Edinburgh	
Explore, Bronze, Silver	Trinity College London - Arts Award	Award
Entry 3 - Level 1	Edexcel Pearson - Essential Digital Skills	Award

FUNCTIONAL SKILLS

Level	Qualification Title	Type
Entry 1 - Level 2	City & Guilds - English/Maths	Full Qualification
Entry 1-Entry 3	City & Guilds - Maths Skills - Themed Mathematics Awards	Award
Entry 1-Entry 3	City & Guilds - Maths Skills - Themed Mathematics Awards	Award

GCSE

Level	Qualification Title	Type
	Edexcel Pearson - English Language	
	Edexcel Pearson - Mathematics	

OTHER
QUALIFICATIONS
MAY BE AVAILABLE
DEPENDENT ON
YOUR NEEDS

* Subject to change

RESIDENTIAL LEARNING

If you would like to live at Portland while you're a learner, our Residential Learning Service at the Mansfield campus is a great option. You'll make lots of friends and can develop your independence and social skills.

Our full-time residential option provides high quality support up to 7 days a week, 38 weeks or 52 weeks of the year.

You will have your own modern, fully-furnished en-suite bedroom and can access shared social spaces in our accommodation hub.

We have a great enrichment programme so you can take part in activities on and off campus too.



“I LIKE MY TUTOR AND MAKING
NEW FRIENDS”

Residential learner

CENTRE OF EXCELLENCE FOR AUTISM



As a Centre of Excellence for Autism, we are proud to hold Advanced Accreditation from the National Autistic Society, their highest accolade possible.

We get to know each one of our learners individually, we understand and support their specific needs and help them work towards their goals.

In partnership with learners and their families, we create a fully tailored programme and wraparound support, giving everyone the chance to really shine.



“THE COLLEGE PROVIDES AUTISTIC LEARNERS WITH A WEALTH OF OPPORTUNITIES TO CONSOLIDATE AND DEVELOP DAILY FUNCTIONAL SKILLS”

National Autistic Society



“LEARNERS BENEFIT FROM A HIGHLY PERSONALISED AND AMBITIOUS CURRICULUM AND MAKE EXCELLENT PROGRESS TO ACHIEVE THEIR LEARNING GOALS”

“THERE IS AN UNWAVERING COMMITMENT DEMONSTRATED BY STAFF TO PROMOTE AND FACILITATE PERSONAL DEVELOPMENT”

“THE MAJORITY OF LEARNERS MOVE ONTO MEANINGFUL DESTINATIONS AFTER COLLEGE SUCH AS ADULT DAY SERVICES, SUPPORTED LIVING, EMPLOYMENT OR FURTHER STUDY”

PORTLAND COMES TO NOTTINGHAM!

Great news! We've expanded our specialist Further Education provisions into Nottingham, so even more people can benefit from the Portland experience.

So, if you live in or near Nottingham, our easily accessible Nottingham campuses could be perfect for you.

FOREST ROAD WEST

A city centre campus focussed on vocational and employment outcomes.

Programmes at Forest Road West are available to all levels of learners.

Work experience and Supported Internships are available to those who are working on their employability skills. We have excellent links with local employers across all areas to help you gain the valuable skills to progress into employment.

Learners on the Gardening and Trades programmes will complete the practical elements of their course at the Walled Garden in Wollaton Park.



WOODBOROUGH ROAD

Specialist support for people with complex needs.

The curriculum aims to provide a nurturing, flexible, and individualised learning environment for learners with complex behavioural needs. It is designed to address therapeutic needs, ensuring that each learner is supported to reach their full potential through personalised programmes in a safe, sensory-rich, and emotionally supportive environment.

IN STEP CURRICULUM

INCLUSIVE and tailored learner journey

NURTURING and supportive approaches to ensure psychological safety

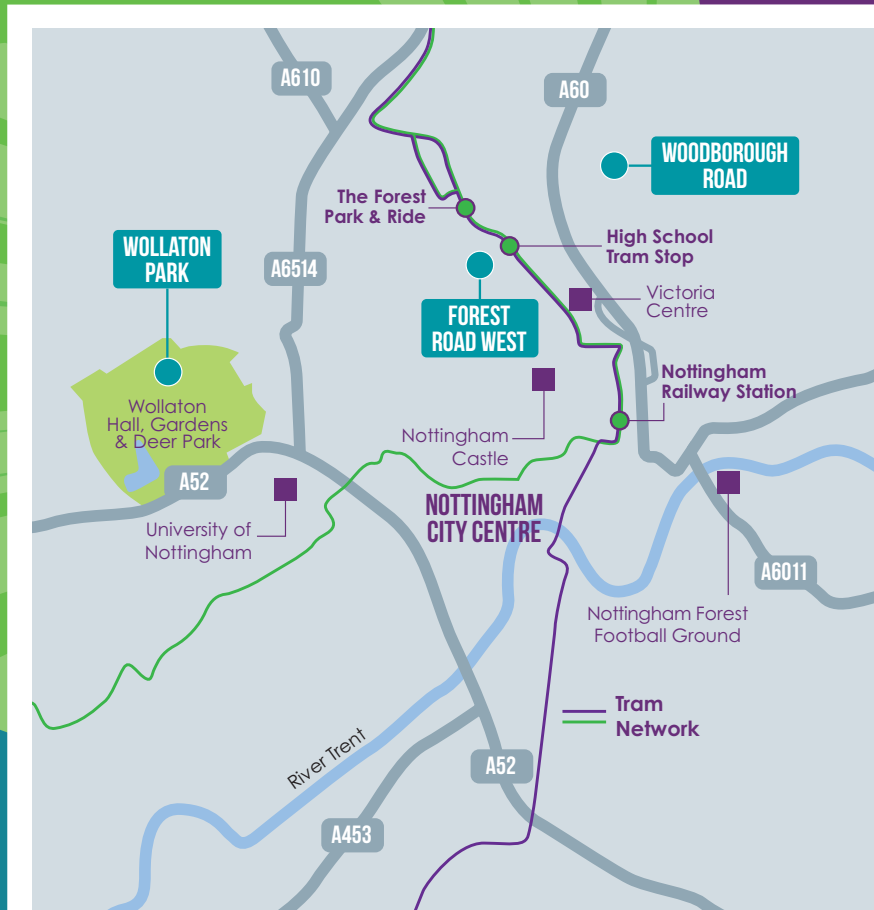
SENSORY programmes embedded in individualised programmes

THERAPUTIC approaches at the heart of the curriculum

EMOTIONAL well-being to enhance quality of life

PERSONALISED SUPPORT to address complex behavioural needs

Challenging the idea that young people should be taught in a linear, target-driven way. This curriculum will present an innovative model for creating learning opportunities to suit the needs and abilities of each individual learner. Focusing on learners with complex needs and addressing their unique needs as they progress towards adult life.



STUDY PROGRAMMES AT FOREST ROAD WEST CAMPUS

1 E-SPORTS & GAMES DEVELOPMENT

If you love gaming then this exciting new course will be right up your street.

Players, designers and other roles are in high demand to support the fast-growing industry of competitive gaming and e-sports and this is a sector where neuro-diverse people really excel.

WHAT WILL I BE DOING?

Based at our Forest Road West Campus, you will learn about working and competing in the e-sports industry, game design, improving your skills and reaction times, developing communication and staying healthy and safe online.

2 GARDENING & TRADES

Be part of restoring the amazing secret garden at Wollaton Park.

Improve your health and well-being by learning outdoors, while gaining lots of independence skills and practical experience.

WHAT WILL I BE DOING?

Based at our Nottingham Campus on Forest Road West, you'll learn a wide range of practical skills in your chosen subject:

- **Horticulture** - how to plant, look after and harvest a range of produce.
- **Basic Trades** - grounds maintenance and entry level trade skills such as brickwork, carpentry and basic DIY.

All practical elements of the programme will take place at Wollaton Park.



NEW
FOR
2025!

3 RETAIL & HOSPITALITY

Starting in 2025, this programme is perfect if you want to work or volunteer in a restaurant, café, shop or office environment.

WHAT WILL I BE DOING?

Based at our Forest Road West Campus, our excellent facilities include a bar, kitchen, live office areas and commercial enterprises, so you will have lots of opportunities to develop your practical skills.

As you progress through your course, you can choose which sector you want to focus more on.



WHEN WILL I BE AT COLLEGE?

These programmes start in September. You'll spend 3 days a week at our Nottingham Forest Road West Campus. A typical week could be:

Day 1 - Tutorials covering Preparation for Adulthood skills.

Day 2 - Improving your English and Maths (if appropriate, you could do GCSE or Functional Skills).

Day 3 - Vocation Day - developing your practical skills in your chosen subject. (At Wollaton Park for Land-Based learners).

Your programme will usually last between 1-2 years. It will be tailored around the outcomes in your Education, Health and Care Plan. This means, we might help you focus on developing your personal skills, or you might choose to study a related qualification up to Level 2.

WHAT'S NEXT?

When you've finished your programme, you might progress into a second year, undertake a Supported Internship, move into mainstream education or choose to look for paid or voluntary employment.

Your Tutor and our Information, Advice, Guidance and Transition Team (IAGT) will help you make your decision.

WHO CAN APPLY?

You will need to be aged 18-24 and have an Education, Health and Care Plan to apply. These courses are suitable for people who do not need 1:1 support.

EMPLOYABILITY

If you want to find a job after Portland, we will help you develop lots of skills and experiences to help you prepare for the world of work.

Our Information, Advice, Guidance and Transition (IAGT) team deliver events throughout the year, including 'Meet the Employer', 'Application Day' and 'Interview Day'.

WORK EXPERIENCE

Work experience is a great way to learn what it's like to work in different industries.

We will talk to you about your work interests and goals and help you to find suitable work experience placements close to your home. You can do up to three work experience placements over the year, each lasting up to six weeks.

We also offer work experience opportunities at Portland College, including reception and administration, the Coffee Shop and other areas across the campus.



SUPPORTED INTERNSHIPS

If you are on the Demonstrate learner journey you will do a Supported Internship as part of your programme.

This option allows you to develop your employability skills in a work-based setting over the course of the college year.

During your Supported Internship, you will complete up to four days per week working within a company, and a day at college learning new skills and developing your English and maths.

Supported Internships can often lead to paid employment at the end of your placement.



CASE STUDY



After a year of studying at Portland, learner Jay was ready to start looking for external work placements to develop his employability skills further. Jay was matched with Derbyshire historical attraction, Chatsworth House, and after a successful visit, he started a work experience placement with their Visitor Experience Team.

Jay worked with a mentor from Chatsworth, to ensure that visitors make the most out of their time at Chatsworth, sharing knowledge about the history of the room and the artefacts within in it.

Jay said of his placement: "It's the best work experience I've ever done, mainly because I feel like I actually work there."

Jay took the challenge in his stride and the Chatsworth team say he was a wonderful addition to the team; "Jay has been an incredible representative of the team. Working collaboratively with his mentor Gill, to enrich each other's way of working."

During the year long placement Jay learned a lot of new skills, from public speaking, to radio etiquette and has surprised his family and teaching staff with his newfound skills and confidence.

From September 2024, Jay will be starting a Supported Internship at Chatsworth, initially supported by a Learning Support Assistant two days per week.

SOME OF OUR EMPLOYERS:



YOUR INDEPENDENCE

We want you to leave Portland College with as much independence as you possibly can. As part of your programme, your Progression Tutor will help you develop your skills in areas such as:

- **Personal Safety** - Teaching you what to do if you need help
- **Road Safety** - Helping you stay safe at the roadside
- **Travel Training** - Giving you the confidence to access public transport yourself
- **Money Skills** - So you can manage financial activities such as making payments, receiving change and budgeting
- **Social Skills** - Helping you feel more comfortable and involved in social situations
- **Concept of Time** - Teaching you how to understand the time and to manage your schedule
- **Independent Living Skills** - Teaching you how to carry out domestic tasks such as cooking, cleaning and managing bills so you can live more independently

Our specialist team will work with you to focus on the key areas that you need the most support with.

“**ABBIE'S CONFIDENCE AND SELF-WORTH HAS GROWN THROUGH HER TIME AT PORTLAND AND HER SUPPORTED INTERNSHIP. IT HAS BEEN LOVELY TO WATCH HER BLOSSOM INTO THE YOUNG ADULT THAT SHE HAS BECOME**”

Parent of learner

LIFE AFTER PORTLAND

Our Study Programmes are designed to provide you with the skills, experience and confidence to build an exciting future.

Our Information, Advice, Guidance and Transition (IAGT) team will work with you to plan the next step of your journey, ensuring you're aware of every opportunity open to you.

If you're not quite ready to enter the world of work, you can apply to join our Progress with Portland learner journey.



PROGRESS WITH PORTLAND

Our Progress with Portland programme in partnership with Inspire Learning, can support you to develop your confidence, skills and experience further to help you transition smoothly into the workplace.

The programme can last for an academic year and will focus on core independence skills and work experience in your chosen industry. You will also be able to improve your English and maths.

PROGRESS LOCATIONS

- **Mansfield Central Library**
Four Seasons Centre, Mansfield, NG18 1NH
- **Portland Nottingham Campus**
Forest Road West, Nottingham, NG7 4EQ





PORTLAND FREEDOM

We provide a variety of accommodation based support programmes for individuals with a range of needs including: physical disabilities, learning disabilities and autism.

For more information call **01623 499111** or email **college@portland.ac.uk**

“I WANT TO BE ABLE TO LIVE IN MY OWN HOME IN THE FUTURE”

Independent Living Resident

Inspected and rated

Good



INDEPENDENT LIVING

This residential service is for people aged 16-65 who need to develop independence skills before they can move into community or supported living.



DAY SERVICE

Based on campus and in community hubs locally, Day Service is available from Monday to Friday for people aged 16+.



SHORT BREAKS

Short Breaks provide a residential respite service for people aged 16-65. A typical stay ranges from three nights to two weeks.



SPECIALIST SUPPORT

These departments work closely together to support learners with their education programme and provide wraparound support in line with their Education, Health and Care Plan (EHCP).

SPEECH AND LANGUAGE THERAPY (SLT)

Our Speech and Language Therapy team support learners with communication needs, including:

- Improving understanding of spoken language.
- Providing an effective means of communication to express their needs and make choices through speech, signing, symbols or use of communication aid devices.
- Understanding and learning about social communication skills.

ASSISTIVE AND COMMUNICATION TECHNOLOGY TEAM (ACT)

The ACT team supports learners to be as independent as possible and achieve their outcomes using a range of technology, ensuring learners can take an active role in their sessions and the wider community.



SPECIALIST SUPPORT

OCCUPATIONAL THERAPY (OT)

The Occupational Therapy team focus on increasing learners' independence skills and engagement with education. We provide individual and group sessions, equipment, and specialist advice and support to the education teams relating to:

- Fine motor skills
- Activities of daily living
- Travel training
- Sensory processing and self-regulation

“THE SILVER TRAVEL TRAINING PROGRAMME HAS MADE ME HAVE MORE CONFIDENCE IN MYSELF”

Learner



POSITIVE BEHAVIOUR SUPPORT (PBS)

We take a positive and person-centred approach to understanding and supporting the behaviours of our learners.

Each learner has a PBS plan in place where needed, which allows us to provide supportive environments and techniques to enhance learners' experience and opportunities.

PHYSIOTHERAPY

Some learners have 1:1 physiotherapy to enable them to fully access their education programmes. Learner physiotherapy programmes are based around their individual needs and are developed to help achieve their education, health and well-being goals.

DONKEY THERAPY

Our herd of donkeys support individuals or small groups to improve their health and well-being. This type of therapy is becoming more mainstream as it has yielded positive benefits for many different people from very diverse backgrounds and situations. One of the fascinating benefits is that you are working on so many different aspects at once. Sometimes, only the donkey and the learner know what has truly changed through developing their partnership. The donkeys at Portland have been very successful in helping to improve the behaviour of individuals, providing support with learning and improving confidence and comforting those in distress.



OUR FACILITIES

Set in the heart of Sherwood Forest, our 32-acre campus provides first-class facilities so you can thrive in a safe and inspiring environment.

Designed to industry standards, our facilities aim to give you the best learning experience.

You can develop your creative flair in our Art Zone, learn a range of land based skills on our farm, or prepare for a future in hospitality and catering in our Coffee Shop.

You might want to build on your construction skills in our new Construction and Manufacturing Centre, or learn hair and beauty techniques in the salon. You can become an experienced sportsperson or develop your confidence on stage in our newly developed Newstart Theatre and Sports Hall.

Whichever path you choose, our facilities will help you gain the skills and experience to progress into employment in your chosen area.



NEW DEVELOPMENTS!

After lots of successful developments last year, our Fundraising Team are busy raising funds for some exciting new projects:

WOODLAND ADVENTURE ZONE - PHASE 2

We are planning to expand our triple award-winning Woodland Adventure Zone to offer more activities including a high-ropes course, parallel assault course and an outdoor classroom to support environment education sessions and mindfulness activities.



THE PINES LEARNER ACCOMMODATION AND INDEPENDENT LIVING APARTMENTS

Work began at the end of 2024 on transforming an existing old residential block into a high-quality residential space with 9 en-suite bedrooms, along with 6 self-contained Independent Living Apartments. The space will be ready for learners to move in in September 2025.



HAIR & BEAUTY SALON

Our Hair & Beauty Salon is being developed ready to open commercially in September 2025.

Learners in here will develop their social and communication skills, and overcome barriers of interaction with new people. They will develop a sensory improvement, especially with touching hair and nails and smelling new products. Learners will also develop skills in professionalism, creating a positive impression to others, whilst understanding the demands of a work role.



FARM EXPANSION

Our exciting plans to expand the farm include a new outdoor learning space where we can deliver additional animal care programmes. We have recently installed a new donkey paddock with new accommodation, enabling us to deliver a Donkey Assisted Therapy service to help improve the mental health and well-being for our learners and wider communities.





YOUR FULLY ACCESSIBLE FOREST ADVENTURE

TRIPLE
AWARD
WINNING

Did you know, as a Portland learner, you'll have free access to our very own Woodland Adventure Zone?

This forest adventure is the perfect place for you to take part in a range of exciting outdoor activities.

Purpose-built within the grounds of Portland College, the Woodland Adventure Zone is accessible to wheelchair users and people with disabilities, ensuring everyone has the opportunity to experience their own woodland adventure.

We're open for public bookings too!
Book your adventure...

T: 01623 499159 E: contact@woodlandadventurezone.com

W: www.woodlandadventurezone.com

Follow us on [@woodlandadventurezone](https://www.facebook.com/woodlandadventurezone)

IN PARTNERSHIP WITH



- Climbing Wall
- Abseiling
- Leap of Faith
- Zipline
- Archery
- Handbike Trail
- Bushcraft
- Woodland Walk
- Play Areas
- Team Building



“LEARNERS WERE OBSERVED ENJOYING USING THE ZIPLINE, IT WAS EVIDENT THAT LEARNERS PARTICIPATING IN THIS ACTIVITY CLEARLY EXPERIENCED A SENSE OF ACHIEVEMENT AND ENJOYED THE EXPERIENCE”

National Autistic Society

SAFE & EQUAL

KEEPING OUR LEARNERS SAFE

Living a life that is free from harm and abuse is a fundamental right for every person.

Here at Portland, all staff, Governors and volunteers are committed to improving the safety and well-being of our learners and citizens.

We also ensure learners and citizens are kept safe online through a range of protective measures.

Our dedicated Safeguarding Team provide support across all areas of the College and are available at any time to deal with safeguarding concerns. We promote a clear process which makes it easy for learners, citizens and staff to raise any safeguarding concerns with the team.



PREVENT DUTY

Prevent is a strand of the Government's Counter Terrorism Strategy. As a college, we help prevent young people from being exposed to radicalisation by upholding and promoting the Fundamental British Values:

- **Democracy**
- **The rule of law**
- **Individual liberty**
- **Mutual respect and tolerance of those of different faiths and beliefs**

Our partnership arrangement with the East Midlands Regional Prevent Network provides us with the opportunity to be informed on national and regional updates which defines and makes our safeguarding practice more effective.



DIVERSITY, EQUITY AND INCLUSION

We celebrate diversity, equity and inclusion. We provide a welcoming and inclusive environment where everyone is respected and valued.



START YOUR PORTLAND JOURNEY

Once you've decided that Portland College is the perfect place for you, your next step is to fill out an application form and send it to our Admissions Team with a copy of your most recent Education, Health and Care Plan (EHCP) and supporting information.

To help you make your decision you can attend a Virtual Open Day or arrange for a personal tour of either the Mansfield or Nottingham campus (or both). You can contact our Admissions Team who will answer any questions you may have.

Once we receive your application, we will look at arranging a meet and greet where we will assess your requirements to make sure we can meet your needs and then we'll tailor a programme to suit you and your interests.



APPLY TODAY

Join us in four easy steps:

1 VISIT US

Whether you want to study at our main campus in Mansfield, or our new Nottingham campus, you can book an individual tour or attend a virtual open day.

2 APPLY

Fill in your application and send it to us with a copy of your most recent Education, Health and Care Plan (EHCP) and other relevant documentation in support of your application.

3 MEET AND GREET

Once you've applied, we will arrange for a meet and greet to take place at whichever Portland campus you have applied for.

4 OFFER

Following an initial meet and greet, if we are able to offer a placement, we will send a conditional offer. All placements are subject to funding being agreed from the applicant's Local Authority.

For more information contact our Admissions Team on
01623 499114 / 499186





Portland College

Nottingham Road, Mansfield,
Nottinghamshire, NG18 4TJ
T: Main College Reception 01623 499111
T: Admissions 01623 499114 / 499186
E: admissions@portland.ac.uk
www.portland.ac.uk

**FOLLOW
US!**

